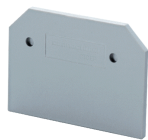


EPCY4/4



## End Plate

End Plates are used to cover the live parts of the last Terminal Block

### PRODUCT SPECIFICATION

Height	32 mm
Length	39 mm
Width (Thickness)	1.5 mm

### ORDERING INFORMATION

CAT. NO.	DESCRIPTION	STD. PACK
EPCY4/4	End Plate in Grey Colour	50

### SUITABLE FOR

CY4/4	4 sq.mm Multiple Connection Terminal Blocks with 4 connection points.
CYG4/3	4 sq.mm 3 wire Ground / Earth Terminal Blocks
CY4/4	4 sq.mm Multiple Connection Terminal Blocks with 4 connection points.
CYG4/4	4 sq.mm 4 wire Ground / Earth Terminal Blocks