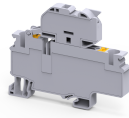


# CPF6



## 10 sq.mm Push in Fuse Terminal Blocks

CP series Push-In Terminal Blocks have a specialised connection system that enables tool less wire connections. Reliable, vibration resistant, gas tight connections are made with inbuilt high quality stainless steel Push in spring clamps.

### TECHNICAL DATA

Rated Voltage	1000 V
Rated Current	10 A
Housing Material	Polymide
Standard Colour	Grey
Product Function	Single Level Fuse
Wire Entry Orientation	Top
Mounting Possibility	DIN 35/DIN 35-15 Rail
Operated by	Screwdriver
Rated Surge Voltage	4 KV
Pollution Degree	3

### CONNECTION DATA

Conductor Cross Section Stranded min.	0.5 mm <sup>2</sup>
Conductor Cross Section Stranded max.	10 mm <sup>2</sup>
Conductor Cross Section AWG/Kcmil min	20 AWG
Conductor Cross Section AWG/Kcmil max	8 AWG
Conductor Cross Section Stranded with Ferrule/Lug min	0.5 mm <sup>2</sup>
Conductor Cross Section Stranded with Ferrule/Lug max	10 mm <sup>2</sup>
Conductor Cross Section Solid min	0.5 mm <sup>2</sup>
2 Conductors with same Cross Section Stranded with TWIN Ferrule/Lug min	0.5 mm <sup>2</sup>
2 Conductor with same Cross Section Stranded with TWIN Ferrule/Lug max	2.5 mm <sup>2</sup>
Stripping Length	12 mm

### DIMENSIONS

Height	66.3 mm
Height with DIN 35 x 15 mm rail	74.6 mm
Height with DIN 35 x 7.5 mm rail	67.1 mm
Length	82.9 mm
Width (Thickness)	8 mm

### FUSE SPECIFICATIONS

Fuse Type	Glass Fuse
Fuse Size	6.3x32 mm
Fuse Current Rating	16 A

### ORDERING INFORMATION

CAT. NO.	DESCRIPTION	STD. PACK
CPF6	10mm <sup>2</sup> Ø6.3X32mm Push In Fuse Terminal Block in Grey Colour	50
CPF6L6-60V	10mm <sup>2</sup> Ø6.3X32mm Push In Fuse Terminal Block with LED Indication 6-60V in Grey Colour	50
CPF6L110-240V	10mm <sup>2</sup> Ø6.3X32mm Push In Fuse Terminal Block with LED Indication 110-240V in Grey Colour	50

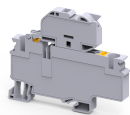
### ACCESSORIES

IMAGES	CAT. NO.	DESCRIPTION	STD. PACK
	CA701-1M	Din 35 Rail unslotted 1 meter	50
	CA701-2M	Din 35 Rail unslotted 2 meter	50
	CA701-2M-S	Din 35 Rail slotted 2 meter	50
	CA701-1M-S	Din 35 Rail slotted 1 meter	50
	CA701-15-1M	Din 35 Rail 15 deep unslotted 1 meter	50
	CA701-15-1M-S	Din 35 Rail 15 deep slotted 1 meter	50
	CA701-15-2M	Din 35 Rail 15 deep unslotted 2 meter	50
	CA701-15-2M-S	Din 35 Rail 15 deep slotted 2 meter	50
	CA103	EndClamp in Polyamide suitable for Din 35/Din 35-15 rails	50
	CA104	EndClamp in Polyamide suitable for Din 35/Din 35-15 rails	50
	CA509/K8	Marking Tag with Vertical printing.	100
	JX6/2	Shorting Link for 8 mm wide TB	100
	JX6/3	Shorting Link for 8 mm wide TB	50
	JX6/4	Shorting Link for 8 mm wide TB	50
	JX6/10	Shorting Link for 8 mm wide TB	10
	MC8	MARKER CARD 8MM PITCH WITH 48 TAGS	10

### APPROVALS



CPF6



#### NOTES

The Rated current is with the use of copper (Cu) conductor/Wire

#### RATINGS AS PER STANDARDS

STANDARDS	UL 1059	IEC/EN60947-7-3
Conductor Cross Section Stranded min.	20 AWG	0.5 mm <sup>2</sup>
Conductor Cross Section Stranded max.	8 AWG	10 mm <sup>2</sup>
Rated Voltage	600 V	1000 V
Rated Current	16 A	10 A